

**Basin Waste without press-closing 1 1/4" - Brushed Platinum**

IMO

10 126 970



Fits: IMO, LULU, MADISON, MEM, TARA,  
CL.1, LISSÉ, VAIA, META, CYO

|                                                                                     |                               |               |
|-------------------------------------------------------------------------------------|-------------------------------|---------------|
|    | Brushed Platinum              | 10 126 970-06 |
|    | Chrome                        | 10 126 970-00 |
|    | Platinum                      | 10 126 970-08 |
|    | Durabress (23kt Gold)         | 10 126 970-09 |
|    | Dark Chrome                   | 10 126 970-19 |
|    | Light Gold                    | 10 126 970-26 |
|    | Brushed Light Gold            | 10 126 970-27 |
|    | Brushed Durabress (23kt Gold) | 10 126 970-28 |
|    | Matte Black                   | 10 126 970-33 |
|   | Brushed Bronze                | 10 126 970-42 |
|  | Brushed Champagne (22kt Gold) | 10 126 970-46 |
|  | Champagne (22kt Gold)         | 10 126 970-47 |
|  | Brushed Chrome                | 10 126 970-93 |
|  | Brushed Dark Platinum         | 10 126 970-99 |



## Basin Waste without press-closing 1 1/4" - Brushed Platinum

---

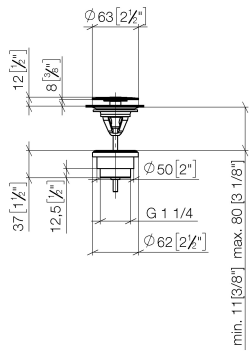
IMO

10 126 970

Only suitable for sinks without an overflow.

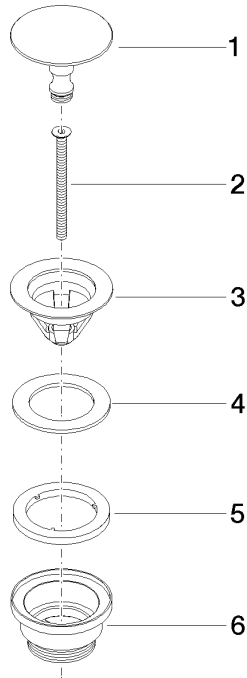
10 126 970

mm [inches]



10 126 970

Parts for other finishes can be found here: [Chrome](#)



### Spare parts list

| No. | Item Number     | Name       | Quantity used | Delivery time |
|-----|-----------------|------------|---------------|---------------|
| 1   | 09 31 20 097-06 | plug       | 1             | 10            |
| 2   | 09 30 30 179 90 | screw      | 1             | 2             |
| 3   | 09 11 01 038-06 | cup        | 1             | 10            |
| 4   | 09 14 05 061 90 | seal       | 1             | 2             |
| 5   | 09 14 03 153 90 | seal       | 1             | 2             |
| 6   | 09 11 10 156-06 | connection | 1             | 10            |